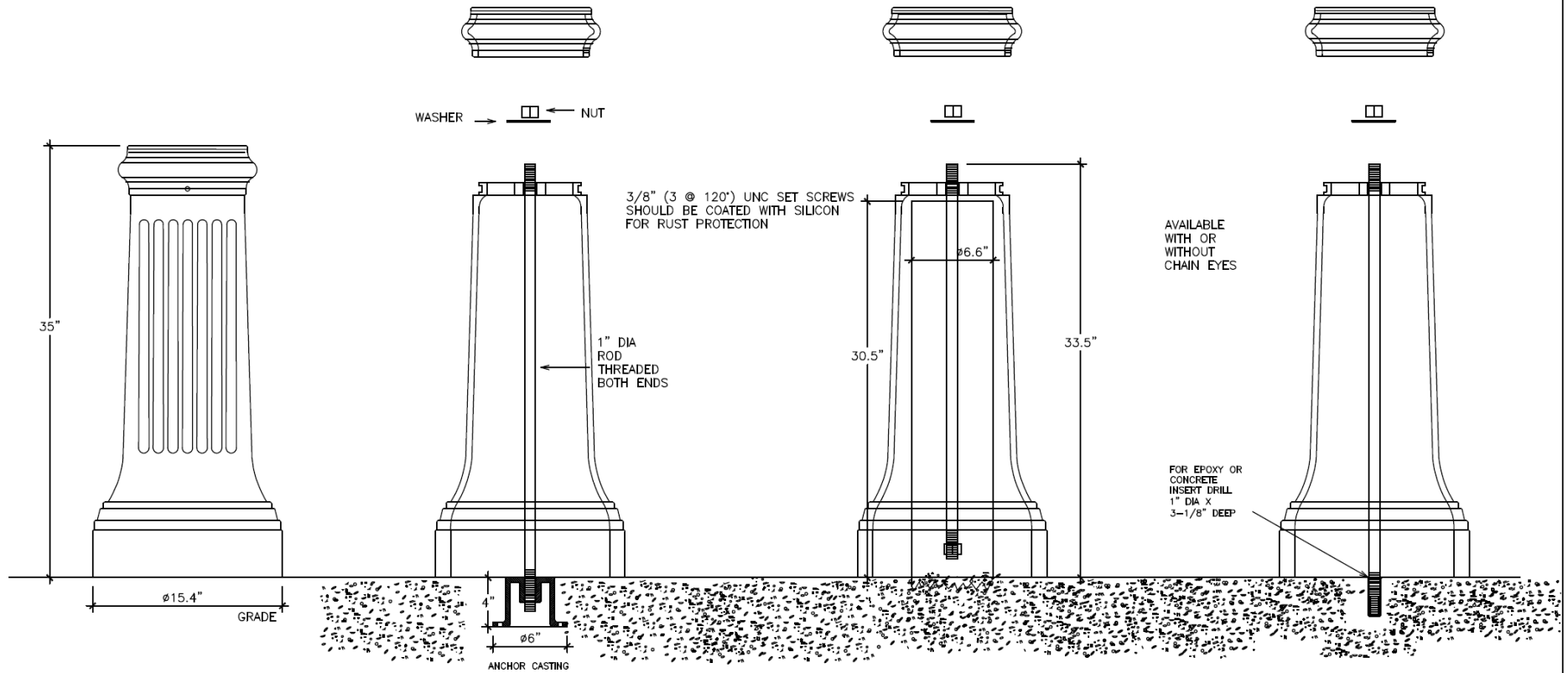


# R7520 BOLLARD

## Standard Installation

## Security/Anti-Ram

## Concrete Insert or Epoxy into Existing Concrete



RELIANCE FOUNDRY CO. LTD.

# R-7520 BOLLARD

## SPECIFICATION SHEET



<b>MATERIAL</b>	CAST DUCTILE IRON, ASTM A536 GRADE 65-45-12								
<b>COATING</b>	<b>MATERIAL</b>	POLYESTER POWDER COAT							
	<b>COLOR</b>	BLACK (OTHER COATING OPTIONS AVAILABLE)							
<b>HARDWARE</b>  STEEL, PLATED OR GALVANIZED UNLESS OTHERWISE NOTED  MATERIALS AND SPECIFICATIONS ARE SUBJECT TO CHANGE WITHOUT NOTICE	<b>DESCRIPTION</b>	<b>STANDARD INSTALLATION</b>		<b>SECURITY / ANTI-RAM</b>		<b>EXISTING CONCRETE EPOXY</b>		<b>EXISTING CONCRETE INSERT</b>	
	35" x 1" UNC ROD	1				1			
	32" x 1" UNC ROD			1					
	35" x 3/4" UNC ROD							1	
	1" UNC NUT	1		2		1			
	3/4" UNC NUT							1	
	1" FLAT WASHER	1		1		1			
	3/4" FLAT WASHER							1	
	3/8" UNC SETSCREWS, BLACK ANODIZED	3		3		3		3	
	CONCRETE ANCHOR CASTING, TAPPED FOR 1" UNC DUCTILE IRON (ASTM A536 GRADE 65-45-12)	1							
	3/4" UNC CONCRETE INSERT, PLATED							1	
	TUBE EPOXY (1 TUBE = 5-10 INSTALLATIONS)					1			
	TUBE SILICONE (1 TUBE = 30 INSTALLATIONS)	1		1		1		1	
CHAIN EYES , 3/8" UNC 1" ID X 1-3/4" OD , POWDER COATED TO MATCH BOLLARD	1 OR 2 (OPTIONAL)		1 OR 2 (OPTIONAL)		1 OR 2 (OPTIONAL)		1 OR 2 (OPTIONAL)		
<b>WEIGHTS</b>		<b>KGS</b>	<b>LBS</b>	<b>KGS</b>	<b>LBS</b>	<b>KGS</b>	<b>LBS</b>	<b>KGS</b>	<b>LBS</b>
	<b>BOLLARD ASSEMBLY</b>	79	173	79	173	79	173	79	173
	<b>HARDWARE</b>	3.5	8	3.5	8	3.5	8	3.5	8
	<b>ANCHOR CASTING</b>	9	20	N/A	N/A	N/A	N/A	N/A	N/A
	<b>TOTAL (SHIPPING) WEIGHT</b>	91.5	201	82.5	181	82.5	181	82.5	181

# RELIANCE FOUNDRY CO. LTD.

#207 - 6450 - 148<sup>TH</sup> STREET, SURREY, BRITISH COLUMBIA, CANADA V3S-7G7

TOLL-FREE: 1-888-735-5680 PHONE: 604-592-4333 FAX: 604-590-8875 EMAIL: BOLLARDS@RELIANCE-FOUNDRY.COM

[WWW.BOLLARDS.CA](http://WWW.BOLLARDS.CA) / [WWW.RELIANCE-BOLLARDS.COM](http://WWW.RELIANCE-BOLLARDS.COM) / [WWW.RELIANCE-FOUNDRY.COM](http://WWW.RELIANCE-FOUNDRY.COM)